



A unique shopping experience, the Arboretum at Great Hills gently beckons you to casually shop the beautiful and relaxed parklike setting that is home to more than 40 fine shops and restaurants in Austin's premier retail area. The Arboretum at Great Hills features a strong tenancy of national retailers and enjoys a regional draw. Shoppers stroll from store to store at this popular destination and enjoy nature's landscape. The mall attracts tourism with the Renaissance Hotel nearby.

Arboretum at Great Hills

10000 Research Blvd, Austin, TX 78759

EYE™ ©. EYE Mall Media (USA), LLC. SALES: 1 877 393 6671.

Sources: SPG Research 5/09. Trade-area demographic information created with Pitney Bowes MapInfo (2008).

PROPERTY FACTS

MALL TYPE | Regional

LEVELS | 1

GROSS LEASABLE AREA | 207,000 sf

FOOD COURT | No

THEATER | No

ANCHORS | 1: Barnes & Noble

STORES | 40+: Bath & Body Works, The Cheesecake Factory, Chico's/Soma Intimates, Coldwater Creek, Express, Francesca's Collections, GameStop, Gap, GapKids, Gymboree, Janie and Jack, Jos. A. Bank, LensCrafters, Pottery Barn, Renaissance Hotel, Salon 505-The Day Spa, Sunglass Hut, T.G.I. Friday's

TRADE-AREA POPULATION | 733,563

AVERAGE ANNUAL HH INCOME | \$88,134

MEDIAN AGE | 32.6

<= 17 23.3%

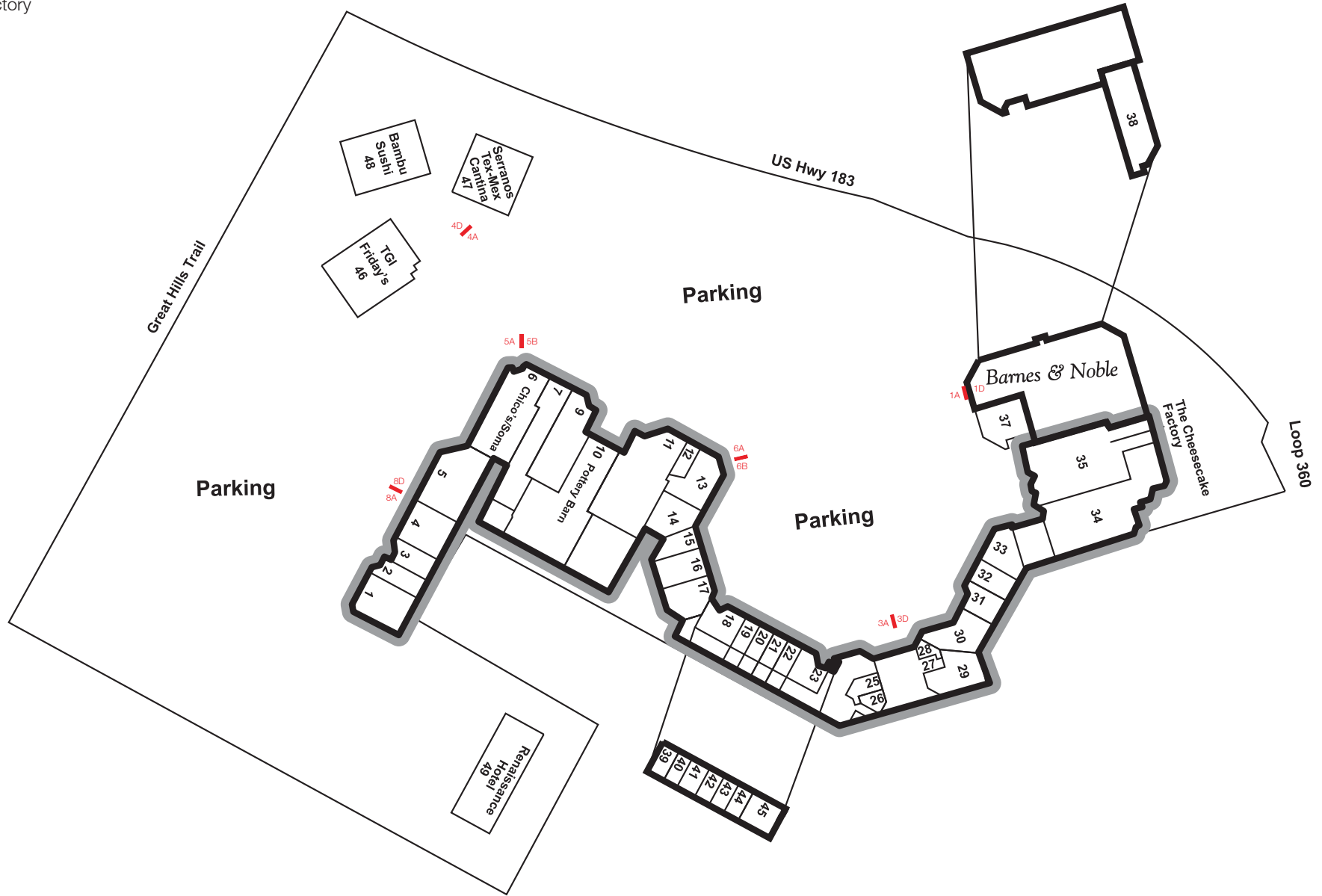
18-34 29.5%

35-54 31.3%

=> 55 15.9%

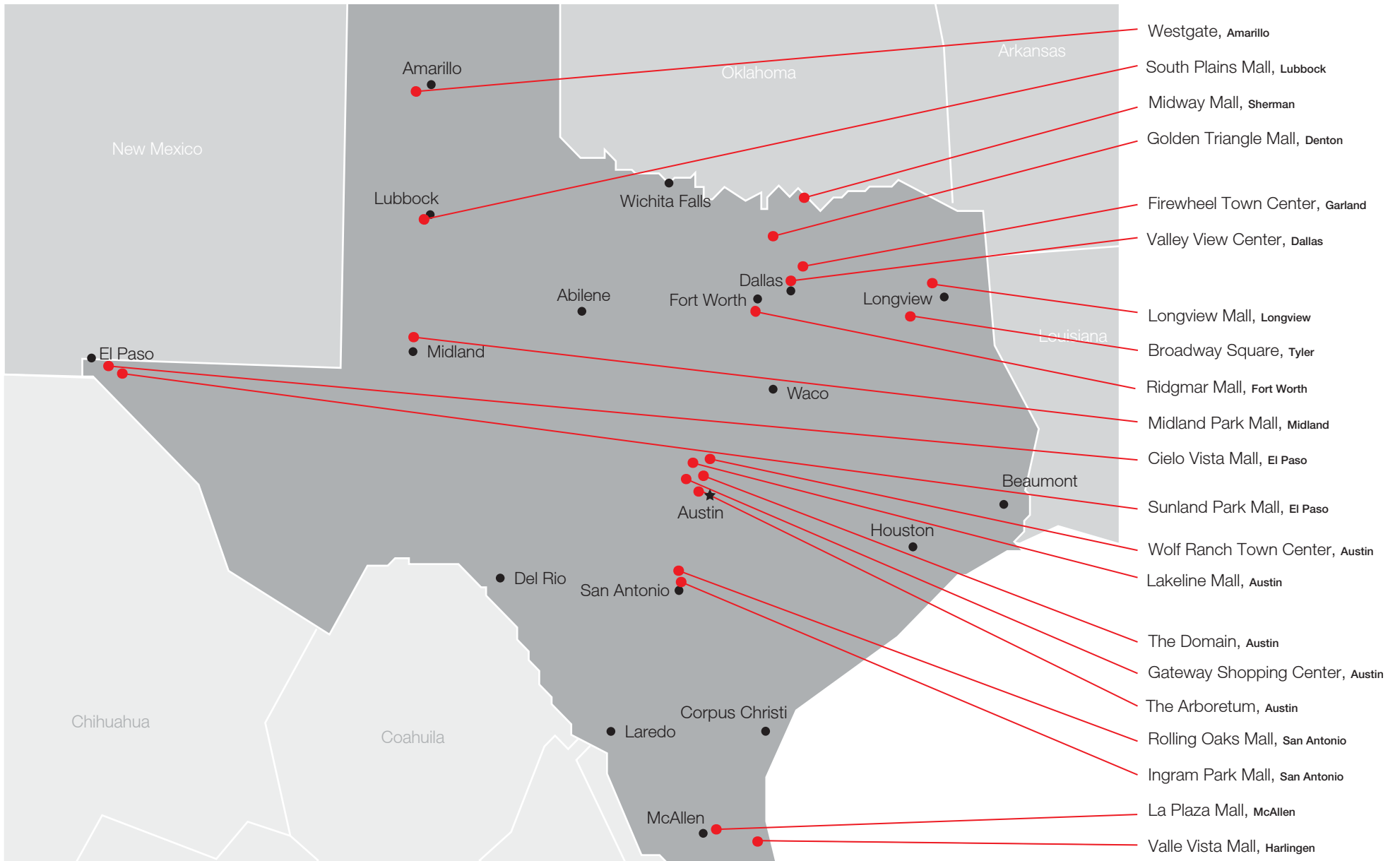
SIMON® | PROPERTY GROUP

eye™



Arboretum at Great Hills

10000 Research Blvd, Austin, TX 78759



Texas

SALES 1 877 393 6671 WWW.EYECORP.COM

Eye Shop. EYE™ ©.

